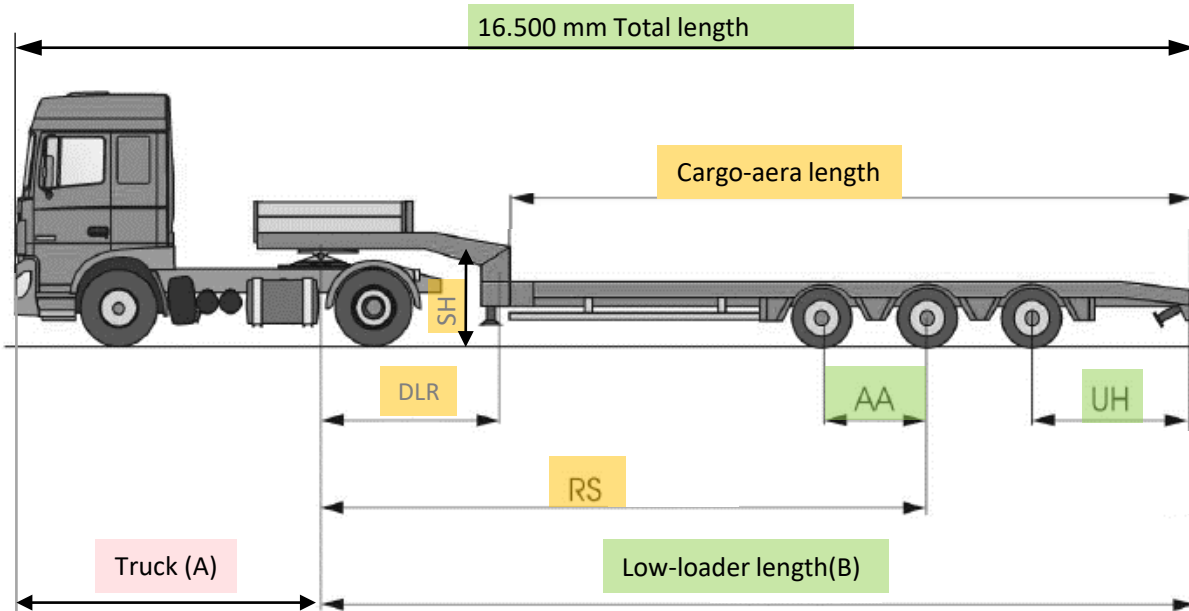




JANUS @ GOLDHOFER AG

WHY JANUS: MARKET REQUIREMENT



Legende:

Freely selectable*

Selectable in steps

Fix



DLR = steering wheel radius

SH = trailer height

RS = theoretical wheelbase

AA = distance between axles

UH = overhang

Trailer 16.500 mm total length → Customer truck is individual = individual loader length.

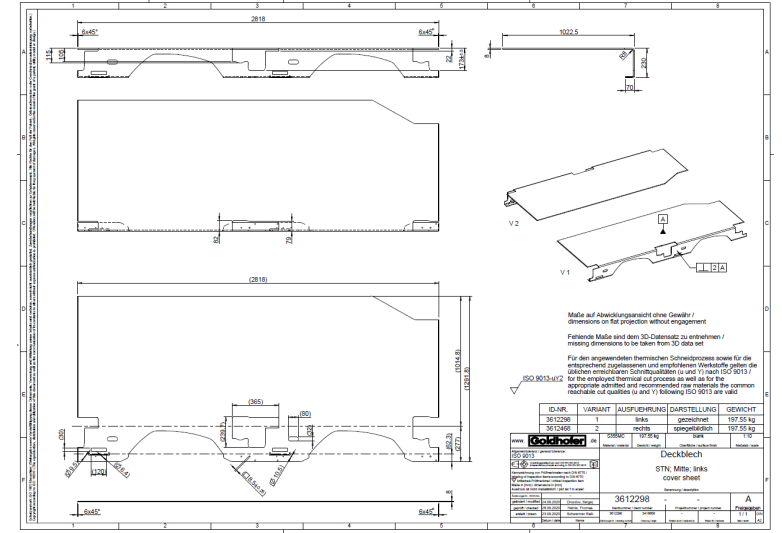
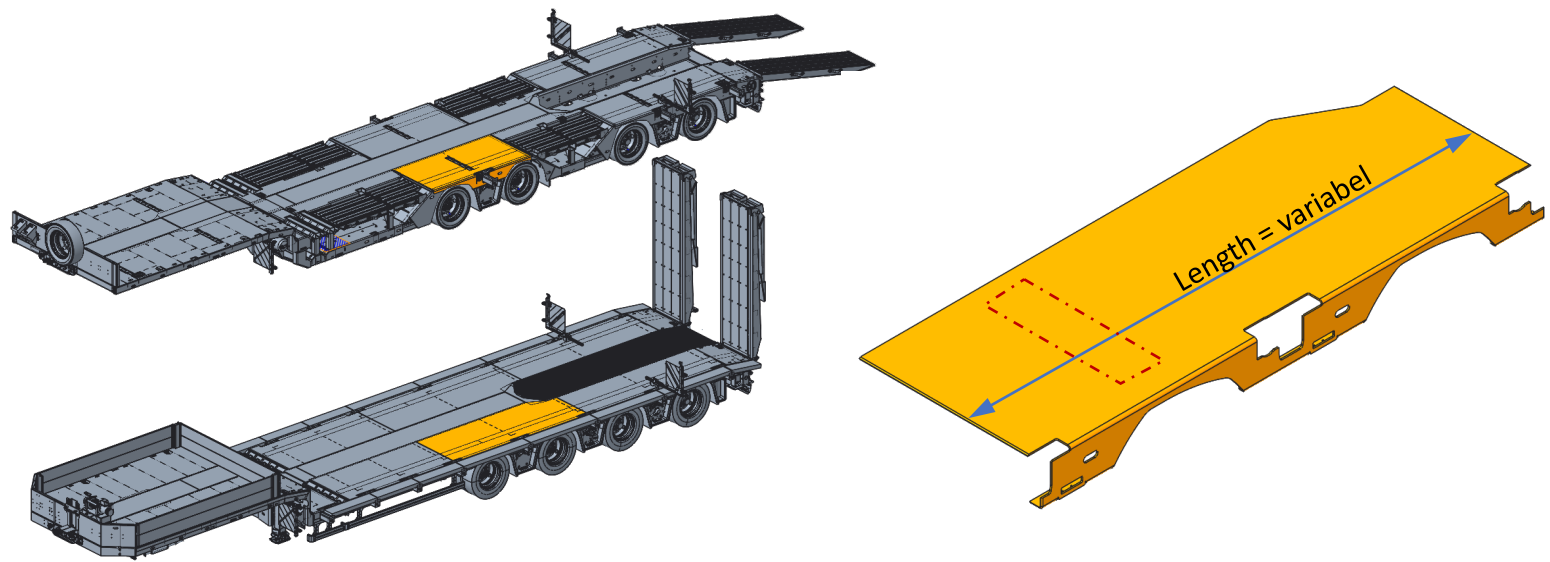
Variance in steel construction necessary → less pre-configuring possible.

In the past each order was individual.

* Customer truck is individual, so each loader is individual as well

WHY JANUS: EXAMPLE CONSTRUCTION-KIT-PHILOSOPHY

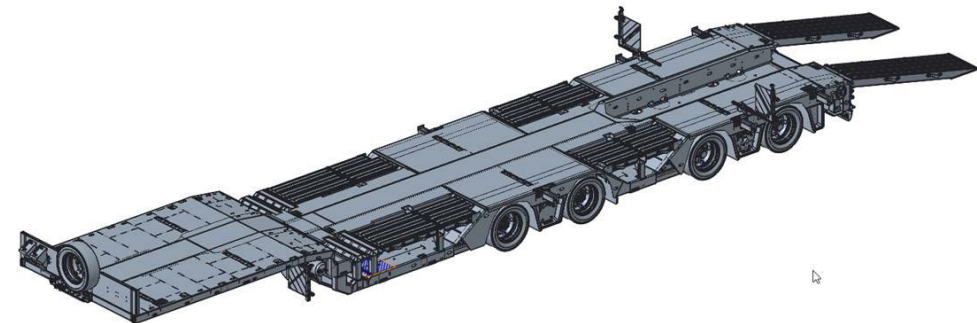
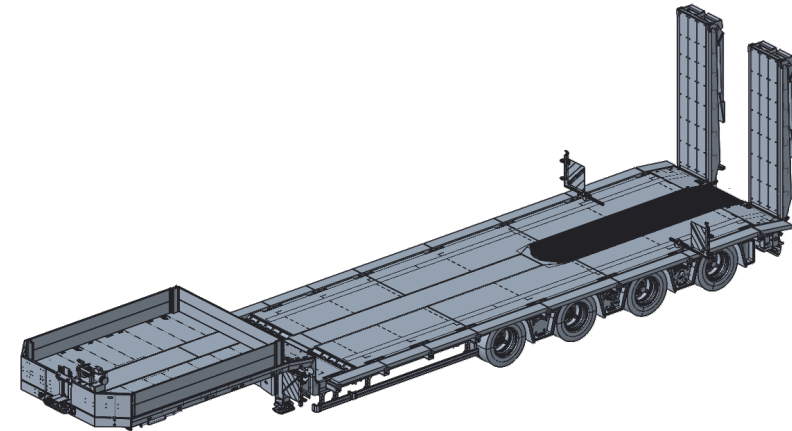
MARKET REQUIREMENT: TOTOAL LENGTH REQUIRES AN ADOPTION OF THE CARGO-AERA LENGTH



- » Sheet metal is welded. Depending on the vehicle length, excavator trough, wheel trough, number of axles, etc., the sheet metal changes - multiplication necessary? **Not all possible configurations will come!**
- » If a variant such as a stake pocket bar is added, the detailed variance is multiplied
- » Derived necessary data, e.g. article creation, drawing creation, parts list, 3D data, test plans and production orders...

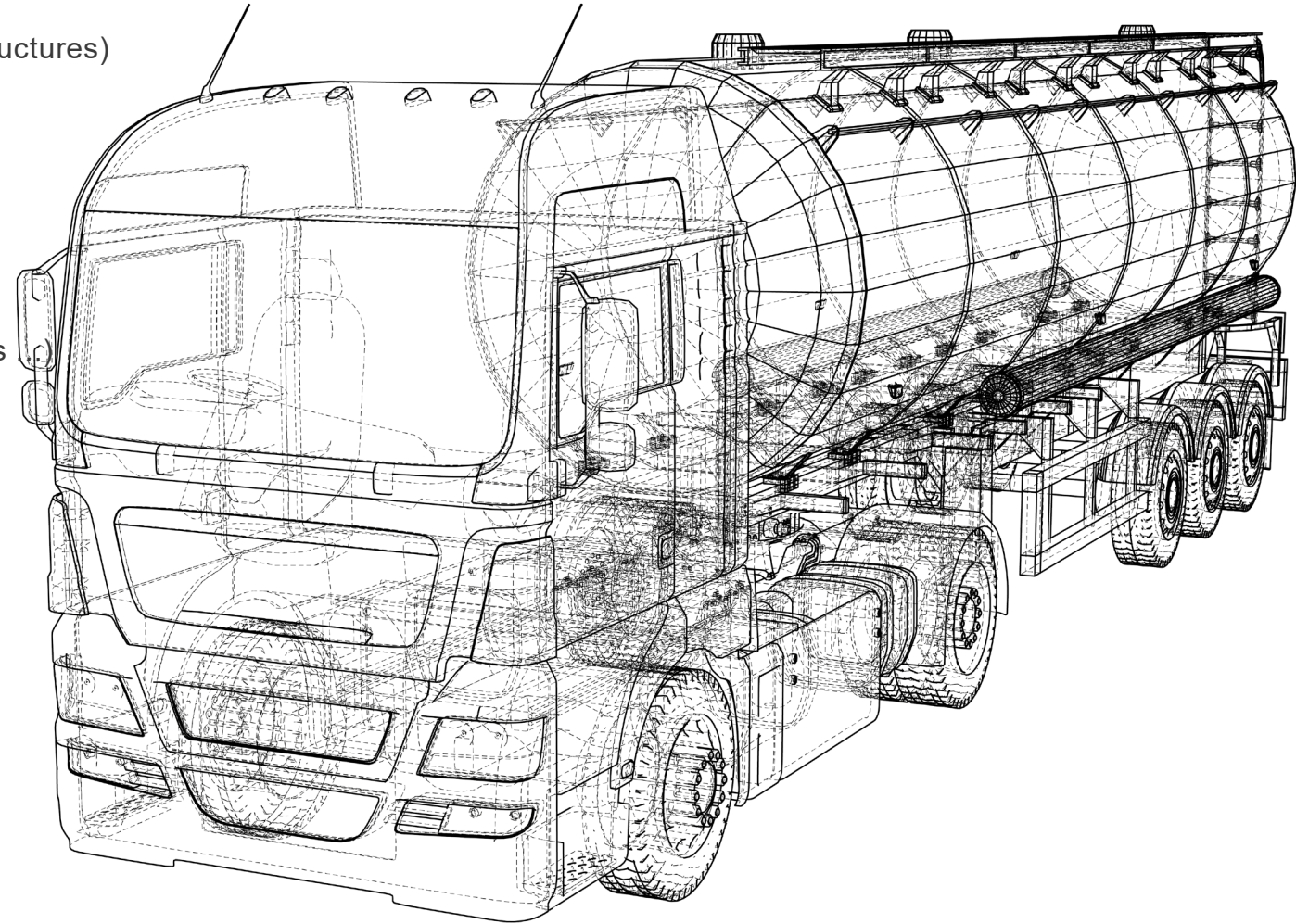
JANUS: FINDINGS FROM THE FIRST PRODUCT LINE AT GOLDHOFER AG

- 150% (MST-) BOM Structure incl. Systemes and Software
- For each order, JANUS generates full automatically:
 - 19 Drawings incl.
 - 52 CAD-components
 - Ø 95% of the order-specific components can be reused
- Reduction engineering time with Janus:
 - Reduction (onl) engineering hours 75%
 - Savings for this producline (200 vehicles /y) = 4800 Stunden
- Now possible with Janus:
 - Pre-productions planing
 - „just-in-time“ - order management
 - and many more



JANUS-BENEFITS

- Fully automatic generation of new articles including WT part (structures)
- Reuse existing components
- Insert or delete delete components
- Create and controll BOM- MBOM-SBOM
- Automatic creation and modification of drawings
- Modify CADS Dimension and Parameters
- Create or delete geometries (caliper pockets, stake pocket strips)
- Change materials
- Change Colors
- Adjust sheetmetal thickness
- Adjust weldings details
- Update and create parameter
- Pre-configure feasibility
- FEM calculation of new variants
- ERP Interface
- CPQ Interface
- Graphical logic Editor
- Parameter Editor
- CAD Interface to Creo Parametric
- And much more



For more information
please visit us on
www.cads-engineering.com
or email us
office@cad-engineering.com